

CERTIFICATE OF LOCATION OF GOVERNMENT CORNER

SOUTH 1/4 Corner of Section 34, Township 105 N, Range 40 W, 5th P.M.

STATE OF MINNESOTA, County of MURRAY

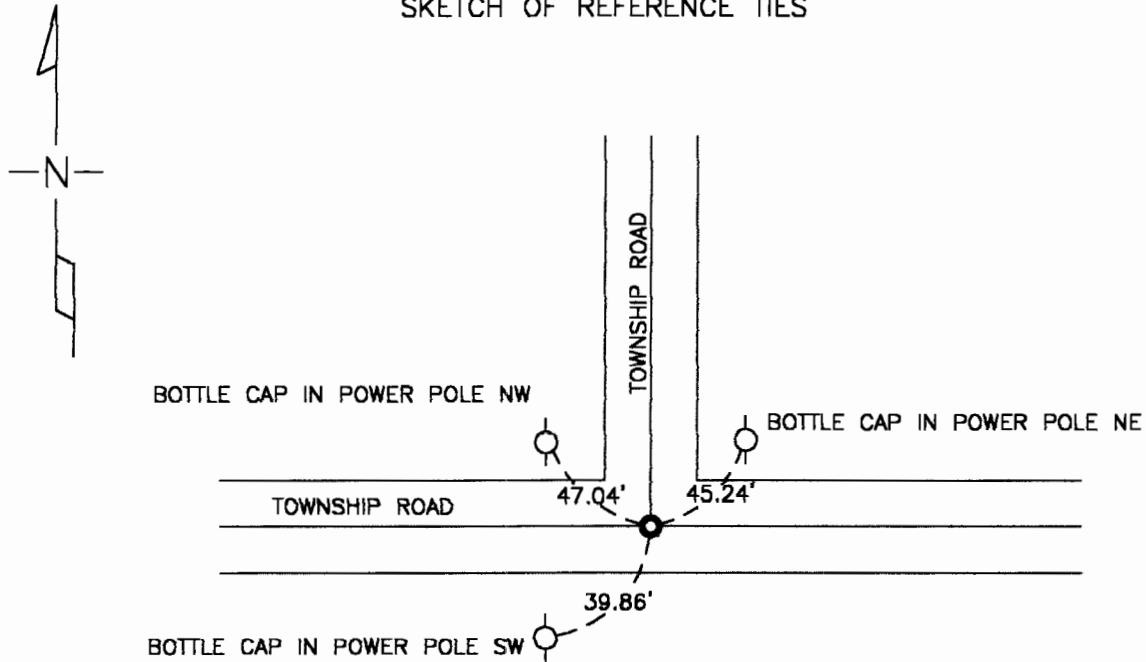
At the corner location shown on the sketch

On 10/16/97 found a 10" STONE IN C.L., 20" DEEP

left monument as found lowered monument, removed monument (explain)

On 10/28/97 placed a 3/4" PIPE W/ CAP NO. 23008 OVER TOP OF STONE

SKETCH OF REFERENCE TIES



Statement of evidence relative to this corner location is on back of page.

I hereby certify that this document and the data contained herein was prepared by me or under my direct supervision.

Perry L. Zieske
SIGNATURE

9-20-00
DATE

MN. REGISTRATION NO. 23008

Land Surveyor, Professional Engineer

County Surveyor, County Engineer

OFFICE OF THE COUNTY RECORDER

I hereby certify that this document was filed in the Co. Recorder's Office at _____ on the

_____ day of SEP 22 2000

County Recorder James V. Johnson
By _____, Deputy

DOCUMENT NO. _____